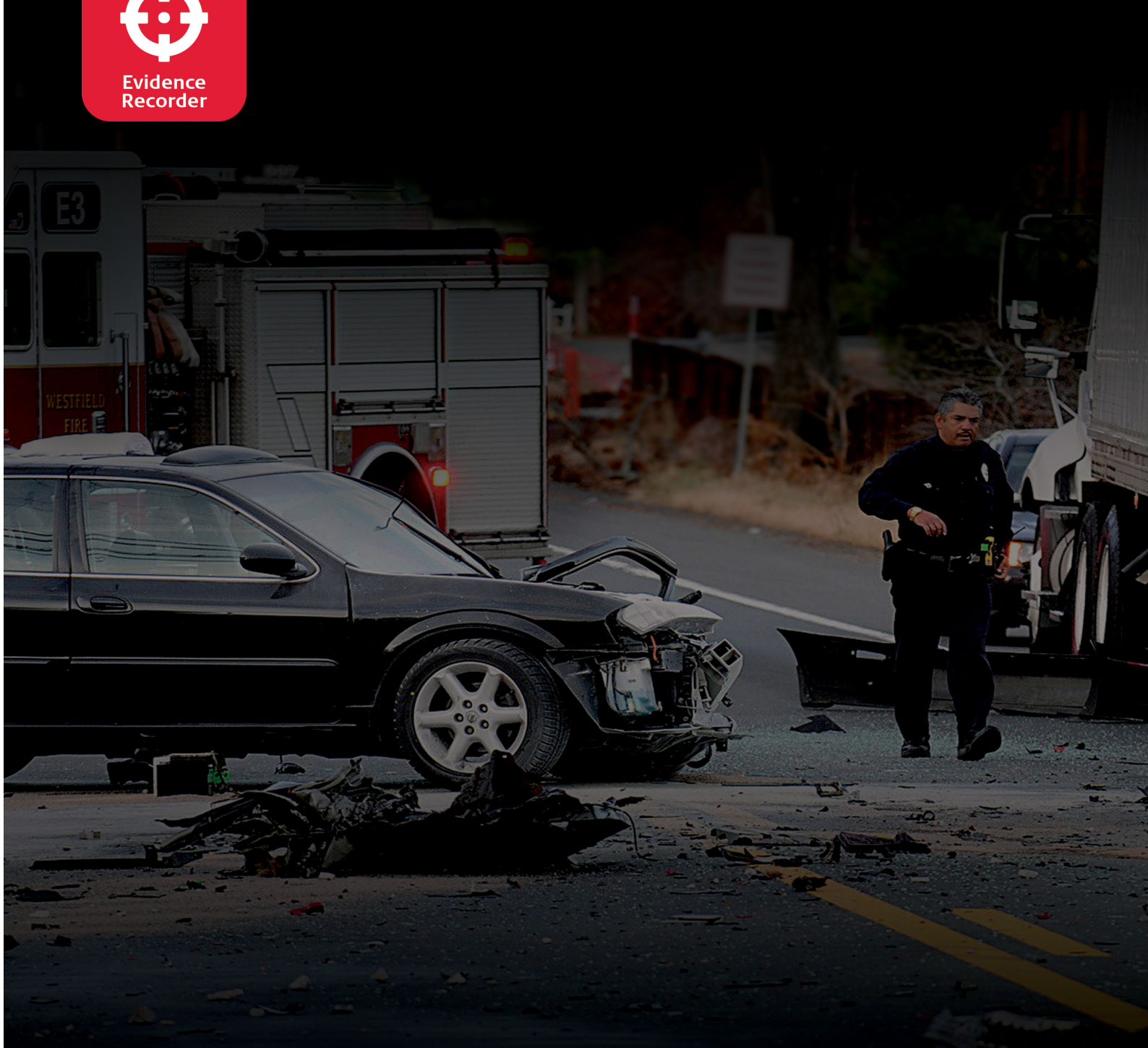


Leica Evidence Recorder Crash and Crime Data Collection Software



Evidence
Recorder



leica-geosystems.com



- when it has to be **right**

Leica
Geosystems

Leica Evidence Recorder

Evidence collection software built specifically for the professional crash and crime scene reconstructionist. The software is quickly becoming the benchmark for law enforcement worldwide when it comes to accuracy and reliability.

Evidence Recorder allows the user to review their measurements in 2D or 3D and confirm there are no errors or missing points before leaving the scene. Evidence will be captured correct and comprehensive every time.



Graphical User Interface

See your mapped evidence points on-screen in 2D or 3D instantly as shots are taken. Evidence Recorder software provides crisp, clear graphics on Windows mobile devices, tablets or laptops.



Hardware Freedom

Works with most total stations, GPS receivers (including RTK) and the Leica Disto S910 and 3D Disto on a multitude of hand-held data collectors.



Library by AutoMAP

Automates line work allowing you to see your drawing take shape at the scene. AutoMAP library description lists are fully customisable and will automatically synchronise to Map360.



INTEGRATION WITH MAP360 SOFTWARE

Create accurate and compelling diagrams in minutes by importing your scene measurements and linework into Map360, including your photos, written and audio notes.

ACTIVE LINES LIST

Map sections of straight or curved roadways efficiently working in a cross-sectional or zigzag manner. Set up the number of road lanes and Active Lines to help you keep track of the lines in progress.

PHOTO, WRITTEN, AND AUDIO NOTES

Attach photos, text and voice notes to your measurements, saving time at the scene. These items will be saved with your coordinate list and accessed in your Evidence log in Map360.

VIDEO POINTS SCANNING

An exclusive feature in Evidence Recorder, allowing you to visually define a scan area through the total station on-board cameras and automatically generate point cloud data with a Leica MS50 or MS60 MultiStations.

ADVANCED SETUP

Unparalleled measuring options and tools are quickly accessible with an intuitive menu structure. Easily perform offsets, and a 3-point resection function allows you to reposition or return to the scene to continue mapping.

SMART TOOLBARS

Items used regularly are a single click away. Menus are context-sensitive; if you click a point in your diagram, you get all the menu items relevant to that point, increasing productivity.

DATA SECURITY

No need for constant saving! Each measurement is automatically saved and protected to ensure evidence integrity. You also have the option to encrypt the working file to protect your data.

SURFACE MODELLING

Easily create 3D surface models. Get a true visual of the collected data to help visualise complex scenes. Ensure the measurements you've collected are correct before you leave the scene.

MORE ADVANTAGES

- Supports a variety of hardware.
- 3D viewing capabilities.
- Use on larger tablets/notepads with Windows O/S.
- GPS data import.
- Offsets and many more sophisticated tools.
- Export as DXF for use with other software.



Leica Geosystems – when it has to be right

Revolutionising the world of measurement and survey for nearly 200 years, Leica Geosystems, part of Hexagon, creates complete solutions for professionals across the planet. Known for premium products and innovative solution development, professionals in a diverse mix of industries, such as aerospace and defence, safety and security, construction, and manufacturing, trust Leica Geosystems for all their geospatial needs. With precise and accurate instruments, sophisticated software, and trusted services, Leica Geosystems delivers value every day to those shaping the future of our world.

Hexagon is a global leader in sensor, software and autonomous solutions. We are putting data to work to boost efficiency, productivity, and quality across industrial, manufacturing, infrastructure, safety, and mobility applications.

Our technologies are shaping urban and production ecosystems to become increasingly connected and autonomous – ensuring a scalable, sustainable future.

Hexagon (Nasdaq Stockholm: HEXA B) has approximately 20,000 employees in 50 countries and net sales of approximately 3.8bn EUR. Learn more at hexagon.com and follow us @HexagonAB



Copyright Leica Geosystems AG, 9435 Heerbrugg, Switzerland. All rights reserved. Printed in Switzerland – 2022.
Leica Geosystems AG is part of Hexagon AB. 000000en – 09.22